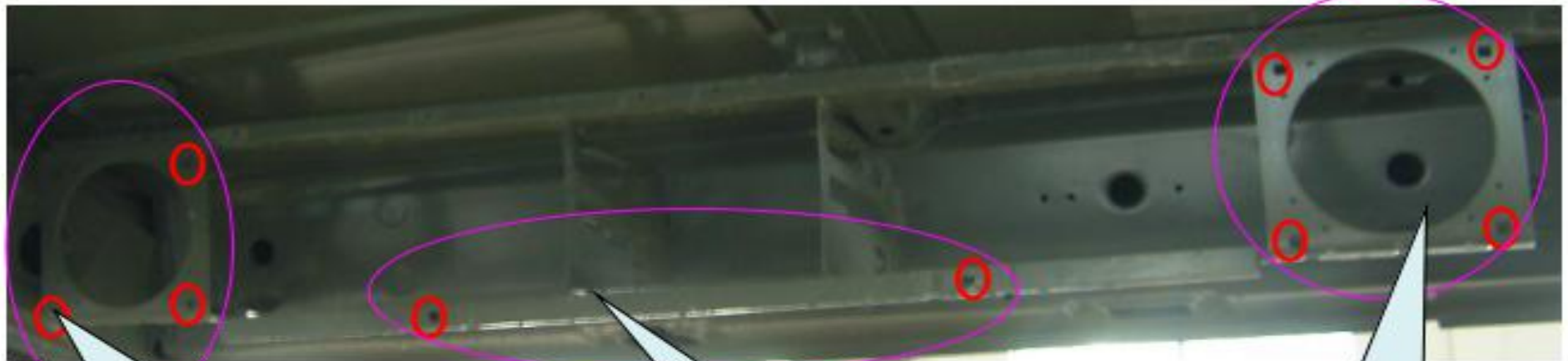


III. Installation of the support sleeve (nut seat)



The three-hole mounting horn cover (left); there are three holes symmetrical on the side to install the horn cover (right)

This two-hole mounting glove box upper cover

This four-hole mounting horn cover (middle)

Note: The mounting position of the support sleeve is a small square hole marked with a small red oval in the above figure.

Part No.:AZ1642770017
Part Name: Support sleeve
Bicycle usage: 12

